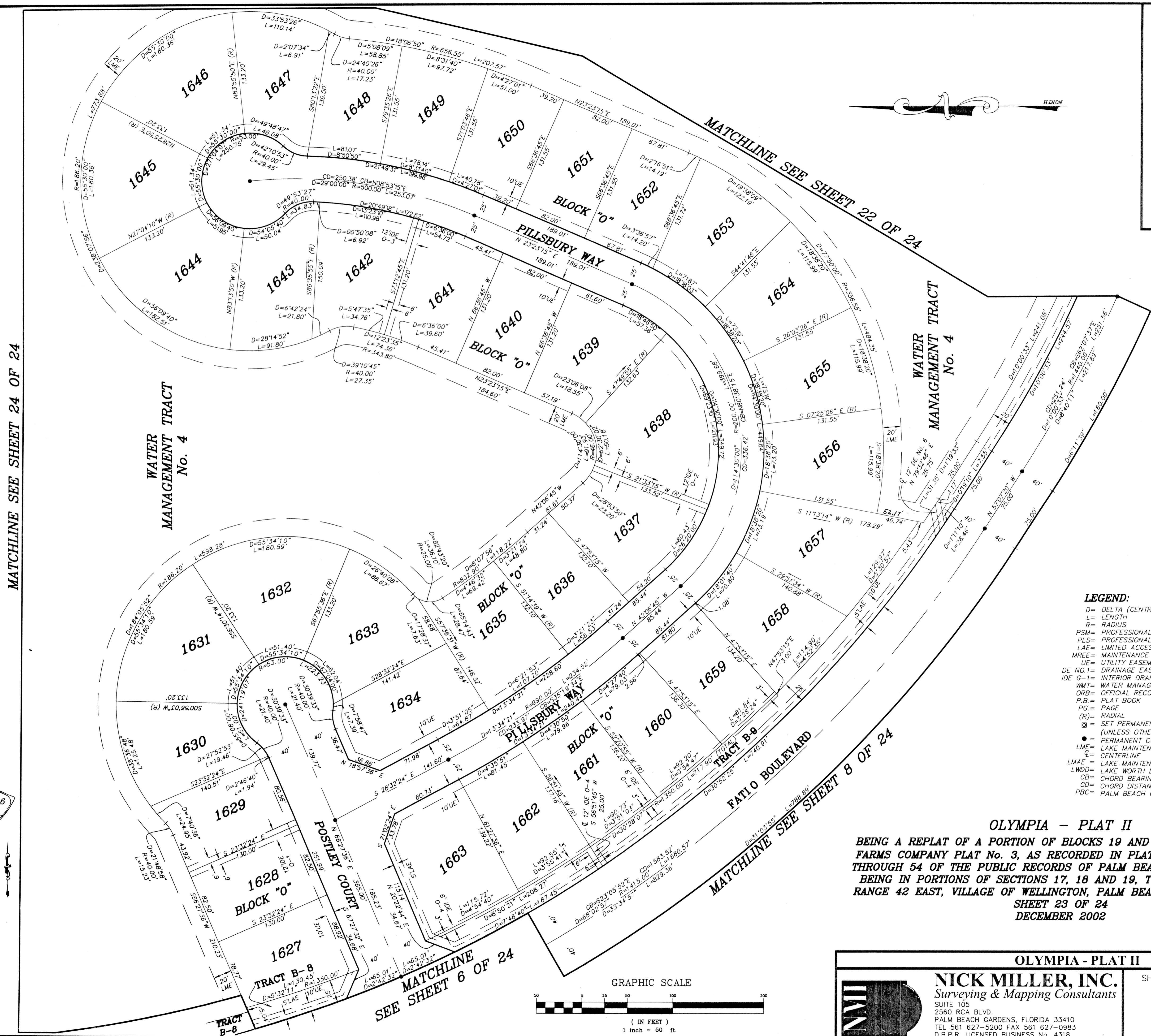
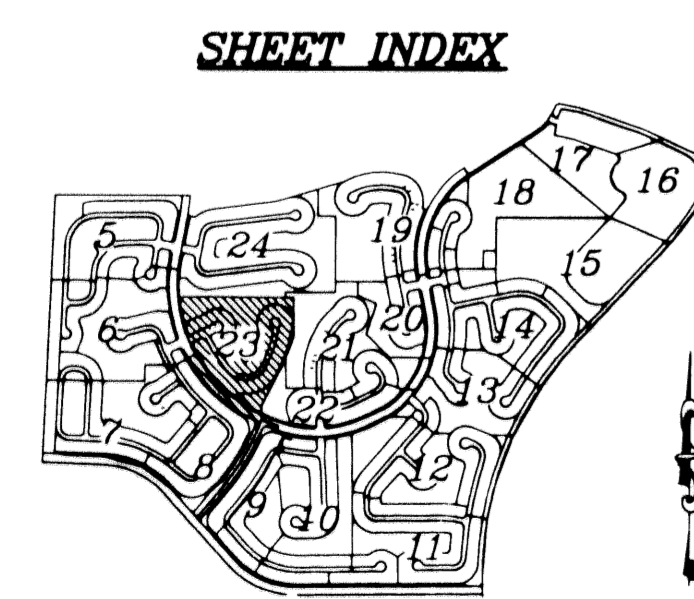


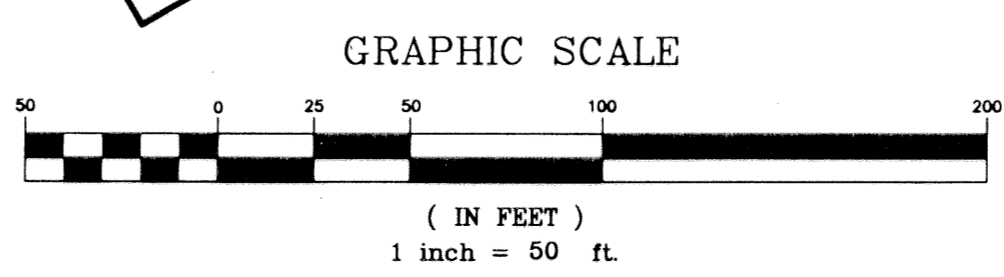
MATCHLINE SEE SHEET 24 OF 24



- LEGEND:**
- D= DELTA (CENTRAL ANGLE)
  - L= LENGTH
  - R= RADIUS
  - PSM= PROFESSIONAL SURVEYOR AND MAPPER
  - PLS= PROFESSIONAL LAND SURVEYOR
  - LAE= LIMITED ACCESS EASEMENT
  - MREE= MAINTENANCE ROOF AND EAVES EASEMENT
  - UE= UTILITY EASEMENT
  - DE NO.1= DRAINAGE EASEMENT No. 1
  - IDE G-1= INTERIOR DRAINAGE EASEMENT No. G-1
  - WMT= WATER MANAGEMENT TRACT
  - ORB= OFFICIAL RECORD BOOK
  - P.B.= PLAT BOOK
  - P.G.= PAGE
  - (R)= RADIAL
  - ☒= SET PERMANENT REFERENCE MONUMENT "LB 4318" (UNLESS OTHERWISE NOTED)
  - = PERMANENT CONTROL POINT "LB 4318"
  - LME= LAKE MAINTENANCE EASEMENT
  - ☒= CENTERLINE
  - LMAE= LAKE MAINTENANCE ACCESS EASEMENT
  - LWDD= LAKE WORTH DRAINAGE DISTRICT
  - CB= CHORD BEARING
  - CD= CHORD DISTANCE
  - PBC= PALM BEACH COUNTY



**OLYMPIA - PLAT II**  
 BEING A REPLAT OF A PORTION OF BLOCKS 19 AND 20 OF PALM BEACH FARMS COMPANY PLAT No. 3, AS RECORDED IN PLAT BOOK 2, PAGES 45 THROUGH 54 OF THE PUBLIC RECORDS OF PALM BEACH COUNTY FLORIDA. BEING IN PORTIONS OF SECTIONS 17, 18 AND 19, TOWNSHIP 44 SOUTH, RANGE 42 EAST, VILLAGE OF WELLINGTON, PALM BEACH COUNTY, FLORIDA  
 SHEET 23 OF 24  
 DECEMBER 2002



<b>OLYMPIA - PLAT II</b>	
	<b>NICK MILLER, INC.</b> Surveying & Mapping Consultants
	SUITE 105 2560 RCA BLVD. PALM BEACH GARDENS, FLORIDA 33410 TEL 561 627-5200 FAX 561 627-0983 D.B.P.R. LICENSED BUSINESS No. 4318
SHEET NO. <b>23</b>	SCALE: 1" = 50' DATE: DECEMBER 2002 JOB NO. 1008.044 FILE: PHASE II